



FxCraft Pitchfork Indicator (Median Line)

User Manual

(version 4.4)



Table of content

FxCraft Pitchfork Indicator (Median Line)	1
User Manual	1
1. Introduction.....	3
2. Short description of the product.....	4
3. Installation.....	4
4. Keyboard shortcuts	6
5. Settings	7
6. Panel informacyjny	8
7. Example of work.....	9
8. Comments	15

1. Introduction

FxCraft Pitchfork Indicator (Median Line) is a tool (indicator) used for automatic determination of channels, the future - the early trends or trends actual - the existing and continuing nature in terms of the regression channel. It is based on the method of Dr. Alan Andrews, who discovered and developed the technique of analysis charts based on the median price - the middle value. The indicator in contrast to the typical tools available on the platform, developing channels very precisely automatically or semi-automatically, which is a major convenience for supporters of "pitchforks". Additionally, it has a very extensive functionality, which will be further explained. For these methods, was created a number of analysis and trading on the markets, including Forex. Therefore, before using read and accept the following conditions:

- 1) Currency trading in the Forex market on margin carries a high level of risk and may not be suitable for all investors. The high degree of leverage may work against you as well as for you. Before making a decision on investing in the Forex market by FxCraft Pitchfork Indicator (Median Line), you should thoroughly consider your investment objectives, level of experience, and your risk appetite. The possibility exists that you can sustain a loss of some or all of your equity and therefore you should not invest money that you cannot afford to lose. You should be aware of all the risks associated with foreign exchange trading, and seek advice from an independent financial advisor if you have any doubts.
- 2) FxCraft shall not be liable for any loss or damage of any kind, including any direct, indirect or consequential damages incurred by the Investor while using FxCraft Pitchfork Indicator (Median Line) whether its action was correct or not. Therefore, we recommend you to thoroughly test and familiarize yourself with FxCraft Pitchfork Indicator (Median Line) in a DEMO account before you start using it in your real account.
- 3) If you notice any abnormality in FxCraft Trade Manager immediately stop the program and report the problem to the FxCraft company by sending an email on office@fxcraft.biz address.

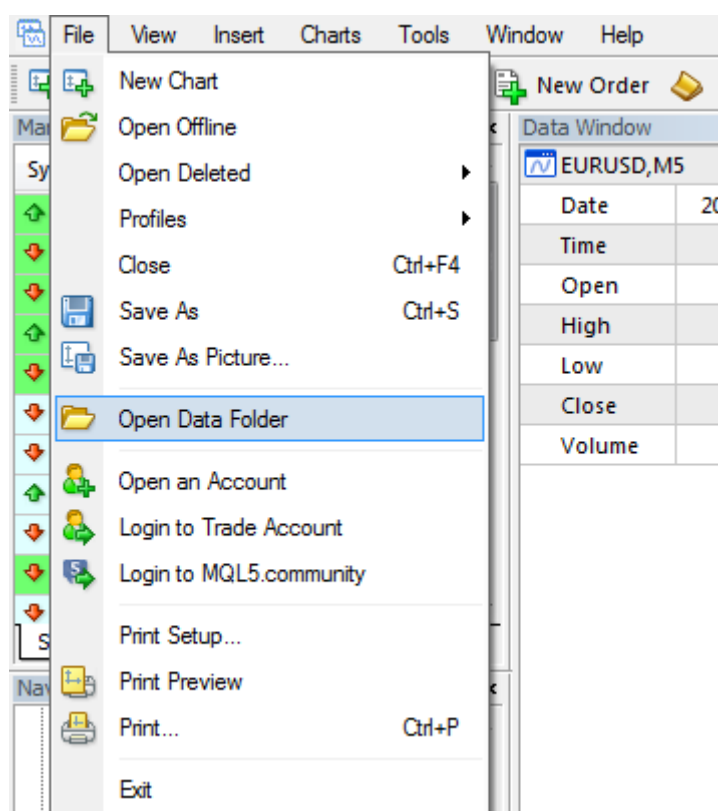
Without the acceptance of the above conditions do not install or use FxCraft Pitchfork Indicator (Median Line).

2. Short description of the product

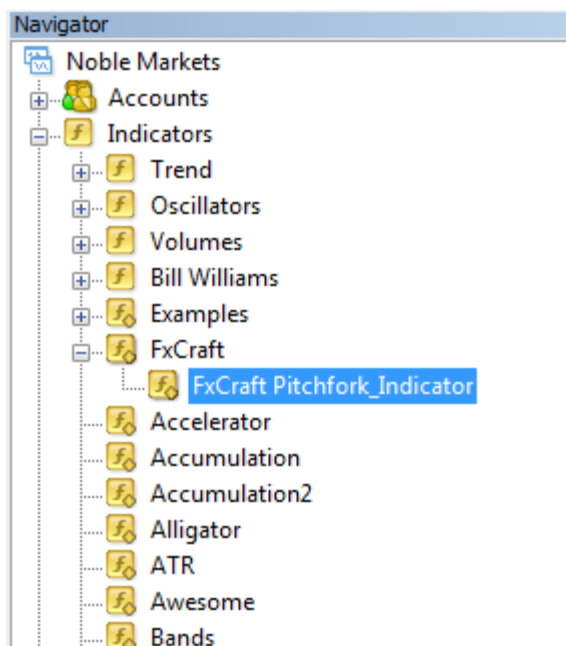
FxCraft Pitchfork Indicator (Median Line) is an indicator, which was created in collaboration with a group of analysts and traders EaFx (www.eaforex.pl), where FxCraft responsible for commercialization and support and maintenance. The tool facilitates the determination of the median on the graph automatically or semi-automatically on the basis of local extremes determined by the type indicator ZigZag. The main advantage is a significant acceleration of determining the desired formation in real time present or past using keyboard shortcuts. An additional advantage is the full precision of anchor points as opposed to manual tools, which are subject to error selected points on the graph by the user.

3. Installation

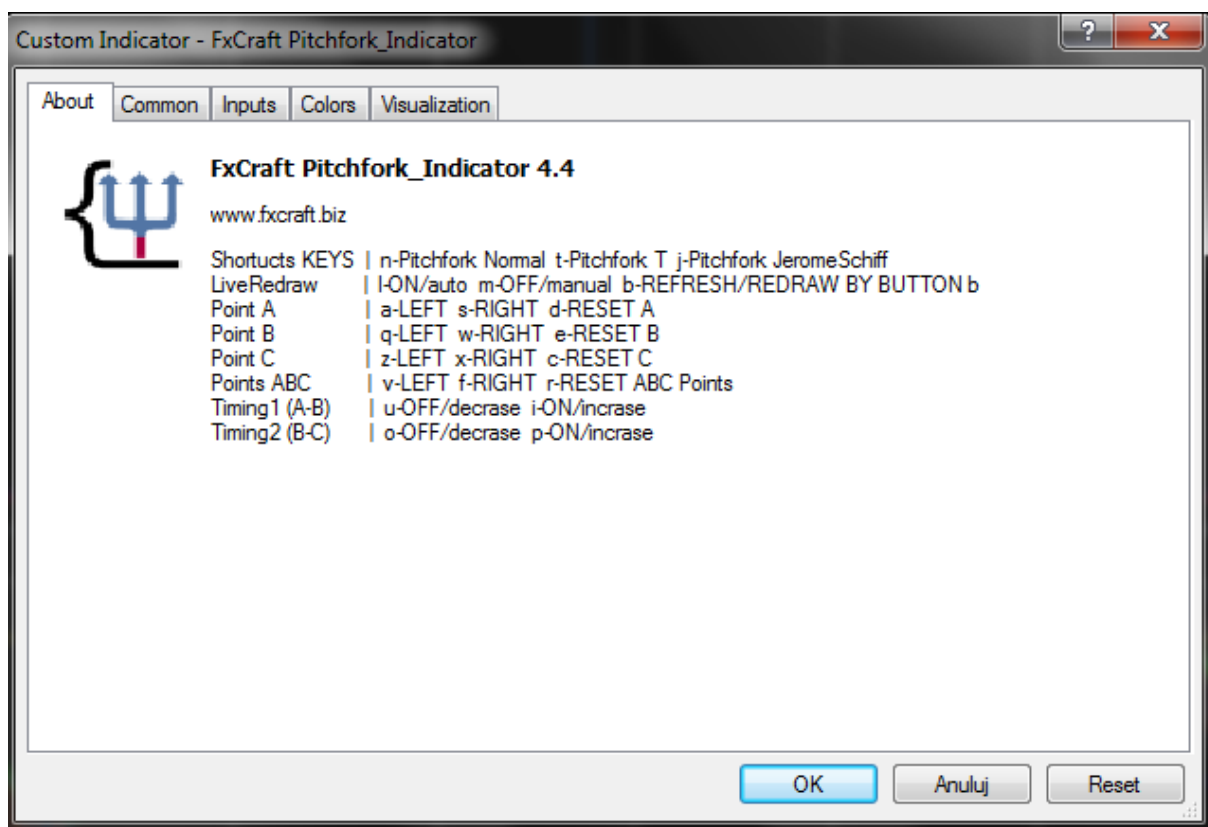
The downloaded zip file must be unpacked. Then, upload the file FxCraft_Pitchfork_Indicator.dll to the \katalog_MT4\MT4\Libraries. FxCraft_Pitchfork_Indicator.ex4 file is placed in the \katalog_MT4\MT4\Indicators directory katalog_MT4 FxCraft The easiest way to get to by clicking on the platform MetaTrader File -> Open Data Folder.



After placing the files Pitchfork Indicator in the appropriate directories must restart MetaTrader or click navigator indicators right-click on the folder icon, or "indicators" and select "Refresh". Now in the Navigator Platform MetaTrader will be visible indicator Pitchfork Indicator ready to run.



To start Pitchfork Indicator on the chosen currency pair, drag the name of the index to the selected diagram. It is not recommended to add several indicators on the same graph (it is rather unnecessary).



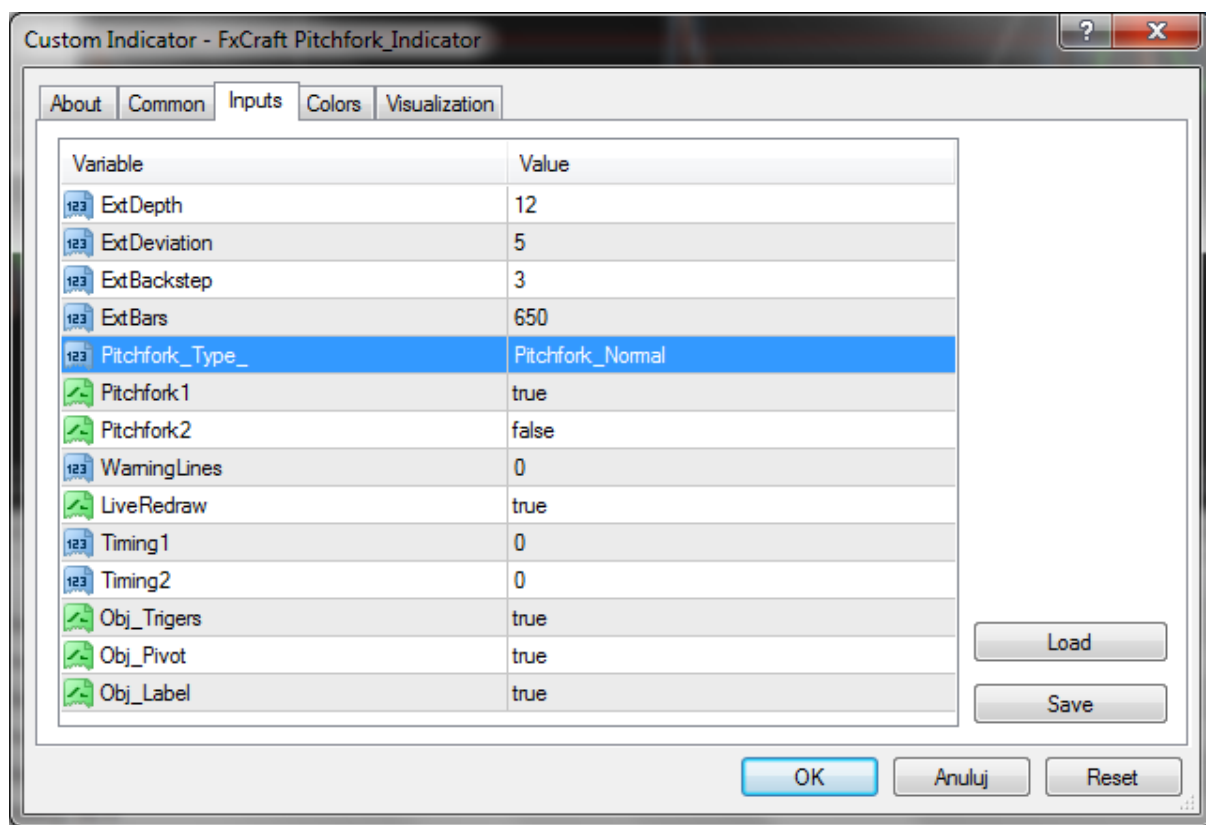
During the launch window appears with information and handheld keyboard shortcuts to handle the indicator. Next on the tabs are setting parameters indicator.

4. Keyboard shortcuts

You have the following keyboard shortcuts that change the status indicator when it is added to the graph, and the graph is active.

- Type - change Pitchfork'a by additional formulas
N - Pitchfork Normal
T - Pitchfork T (A point based on the average value between A-B or A-C)
J - Pitchfork JeromeSchiff (by Dr Andrews's student, which was Jerome Schiff)
- LiveRedraw – change the designation of the auto-refresh for new candles
L - ON/auto (adjustment to the newly created formation live and automatically)
M - OFF/manual (adjustment to the newly created manually formation and preservation of historical formation)
B - REFRESH/REDRAW BY BUTTON b (refreshes the data for the indicator)
- Determination of the point A - moving the anchor point
A - LEFT **S** - RIGHT **D** - RESET Point A
- Determination of the point B - moving the anchor point
Q - LEFT **W** - RIGHT **E** - RESET Point B
- Determination of the point C - moving the anchor point
Z - LEFT **X** - RIGHT **C** - RESET C
- Determination of points ABC - shift the entire formation (same abbreviations)
V - LEFT **F** - RIGHT **R** - RESET ABC Points
< - LEFT **>** - RIGHT
, - LEFT **.** - RIGHT
- Timing1 (A-B)
U - OFF/ - **I** - ON/ + (push multiply this same btn to add/delete more)
- Timing2 (B-C)
O - OFF/ - **P** - ON/ + (push multiply this same btn to add/delete more)
- WarningLines
[- OFF/ - **]** - ON/ + (push multiply this same btn to add/delete more)
- Pitchfork2
G - ON **H** – OFF

5. Settings

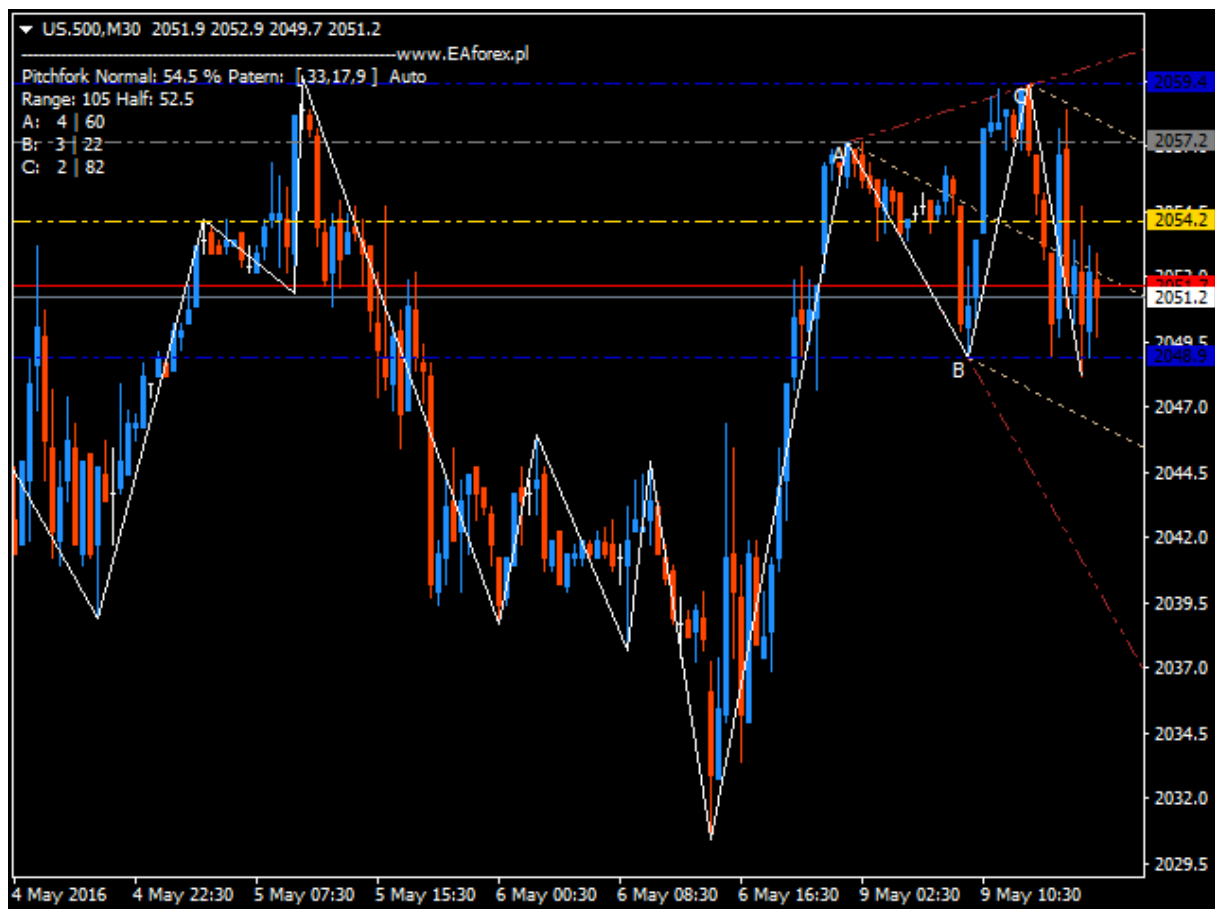


- ExtDepth – standard parameter ZigZag'a.
- ExtDeviation – standard parameter ZigZag'a.
- ExtBackstep – standard parameter ZigZag'a.
- ExtBars – custom parameter ZigZag'a (how many candles to draw ZigZag - can offload rate and speed calculations if there is a large amount of historical data - lots of candles).
- Pitchfork1 – main "forks".
- Pitchfork2 – historic "fork" (shift formation of one extreme backward), enables or disables the previous formation of the keyboard shortcut G / H (ghost / hide).
- WarningLines – additional arms fork, 0 = no, 1 = extra pair on each side (possibility to add 15 pairs - limit).
- LiveRedraw - change the designation of the auto-refresh for new candles on manually (by default TRUE = on), accessible via keyboard shortcut L / M (live / manual).
- Timing1 – automatic tool Fibo Time cyclically determined from points A and B continue to set the value from 0 - 15, 0 = disabled, keyboard shortcuts U / I.
- Timing2 – automatic tool Fibo Time cyclically determined from points B and CO on to set the value from 0 - 15, 0 = disabled, keyboard shortcuts O / P.
- Obj_Trigers – trend lines run from point A to B and A to C.
- Obj_Pivots – horizontal lines driven by the price of A, B, C, and "gold" by means of B and C..
- Obj_Label – numerical values deducted from the current price to the points A, B, C, and "gold" means B and C.

6. Information panel

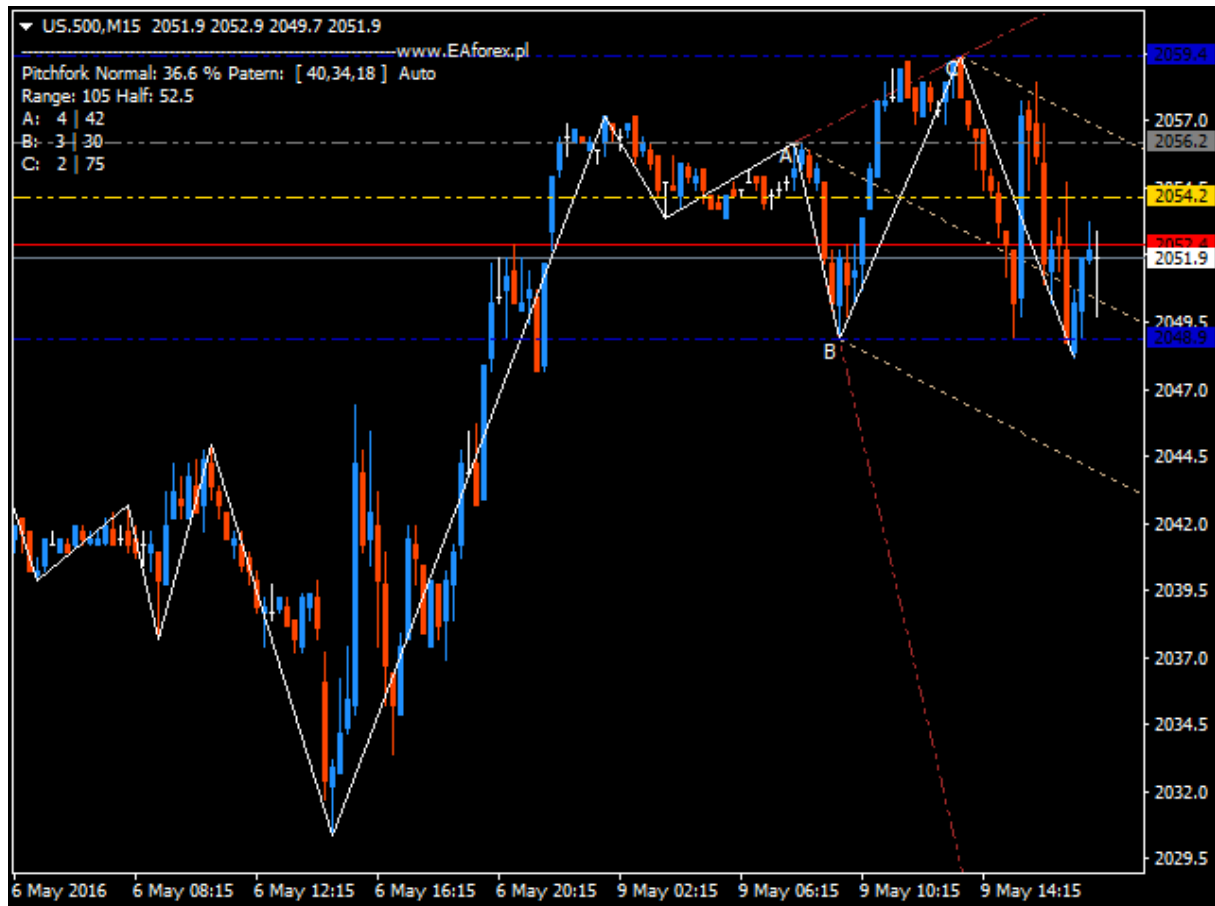
Under the name of the chart is available panel indicating about:

- Type indicator (Pitchfork Normal, Pitchfork T Pitchfork JeromeSchiff)
- Fork slope in percentages (eg prefer different methods. Ideal slope tending to 45%),
- Patern (numbers of candles for the points A, B, C) [A candle = 33, B = 17 candle, candle C = 9]
- LiveRedraw, i.e. determining the formation of the "Auto" or "Manual"
- Range, i.e. the width of the channel as a range pip between points B and C
- Half, which is half the width of the channel (Range / 2), as a range pip between points B and "gold" and C and the "gold"
- A: 4 | 60 means that A is 4 extreme ZigZag and is 60 pips from the current price
- B: 3 | 22 means that B is 3 extreme ZigZag and is 22 pips from the current price
- C: 2 | 82 means that C is on the 2 extreme ZigZag and is 82 pips from the current price



7. Example of work

Moved the whole formation of the 1 single extreme V backward on historical extremes.



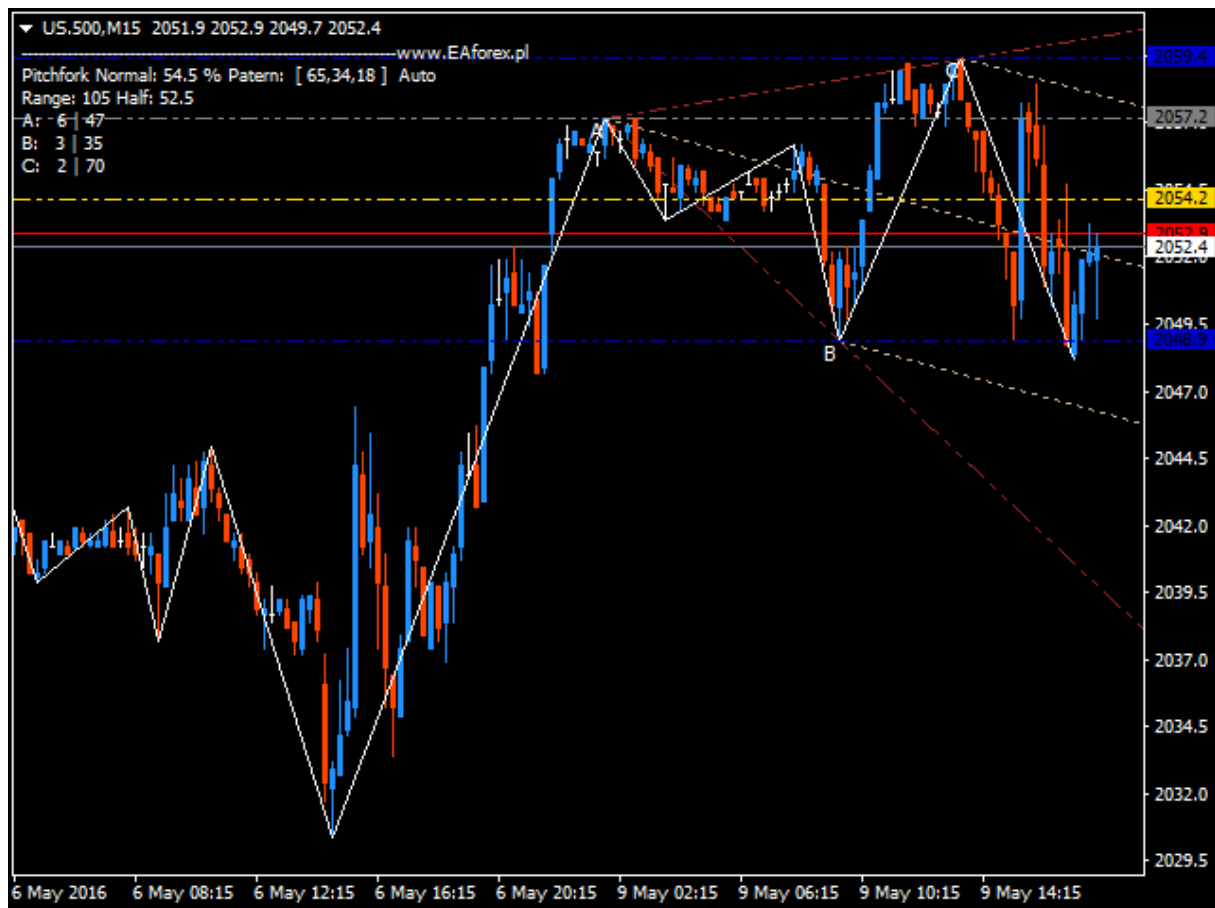
Return to the previous state can be carried by the V key by clicking several times (2) or R - resetting formation, where the points would adopt the states

A = 3, B = 2, C = 1

to the current

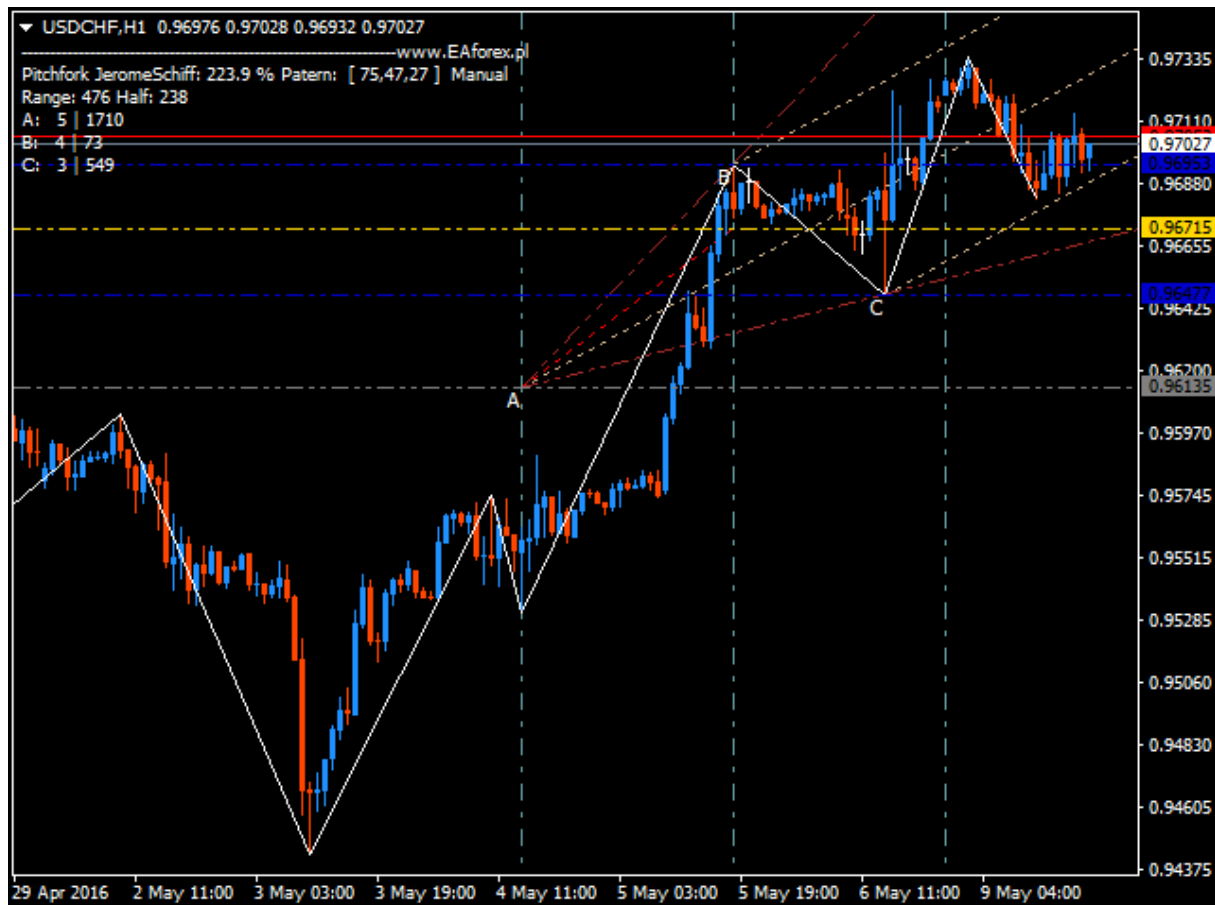
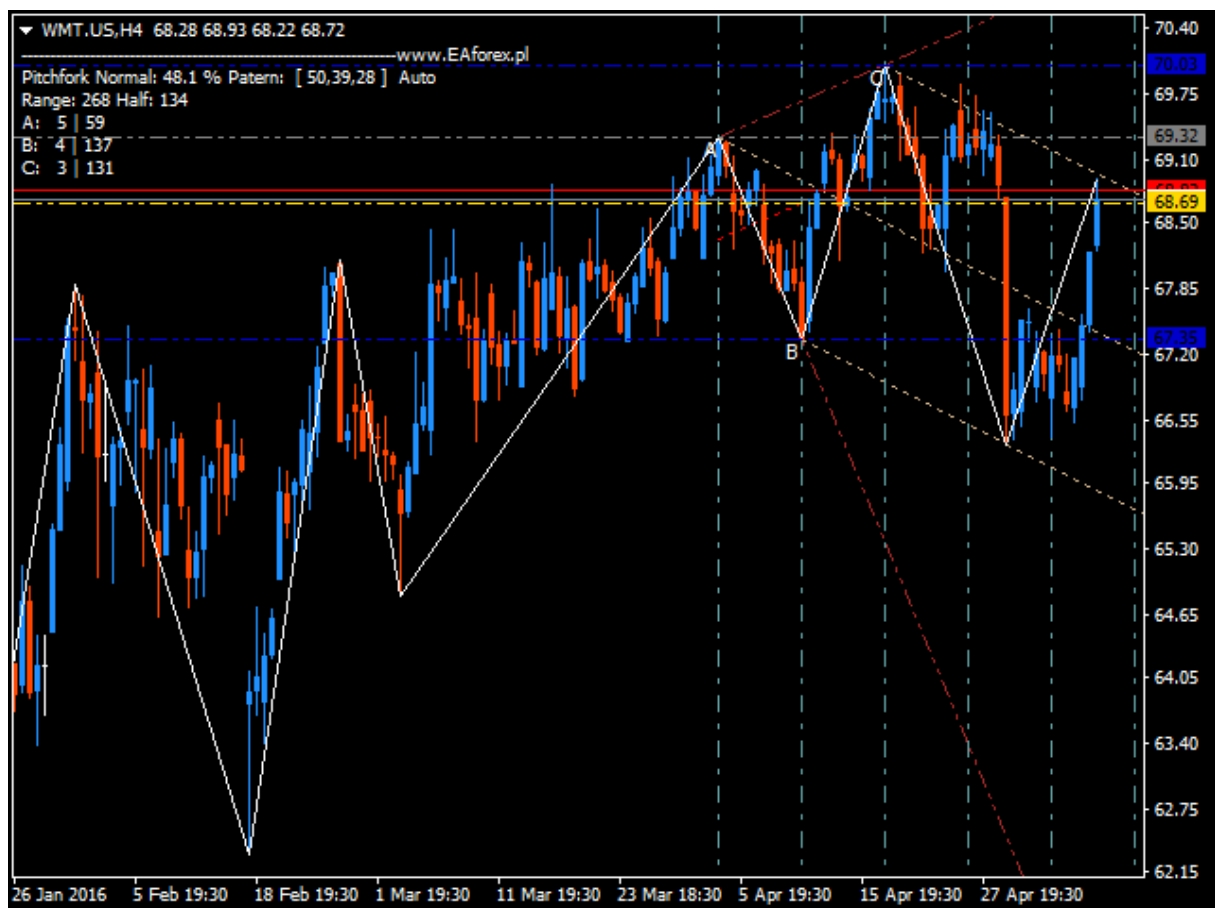
A = 4, B = 3, C = 2

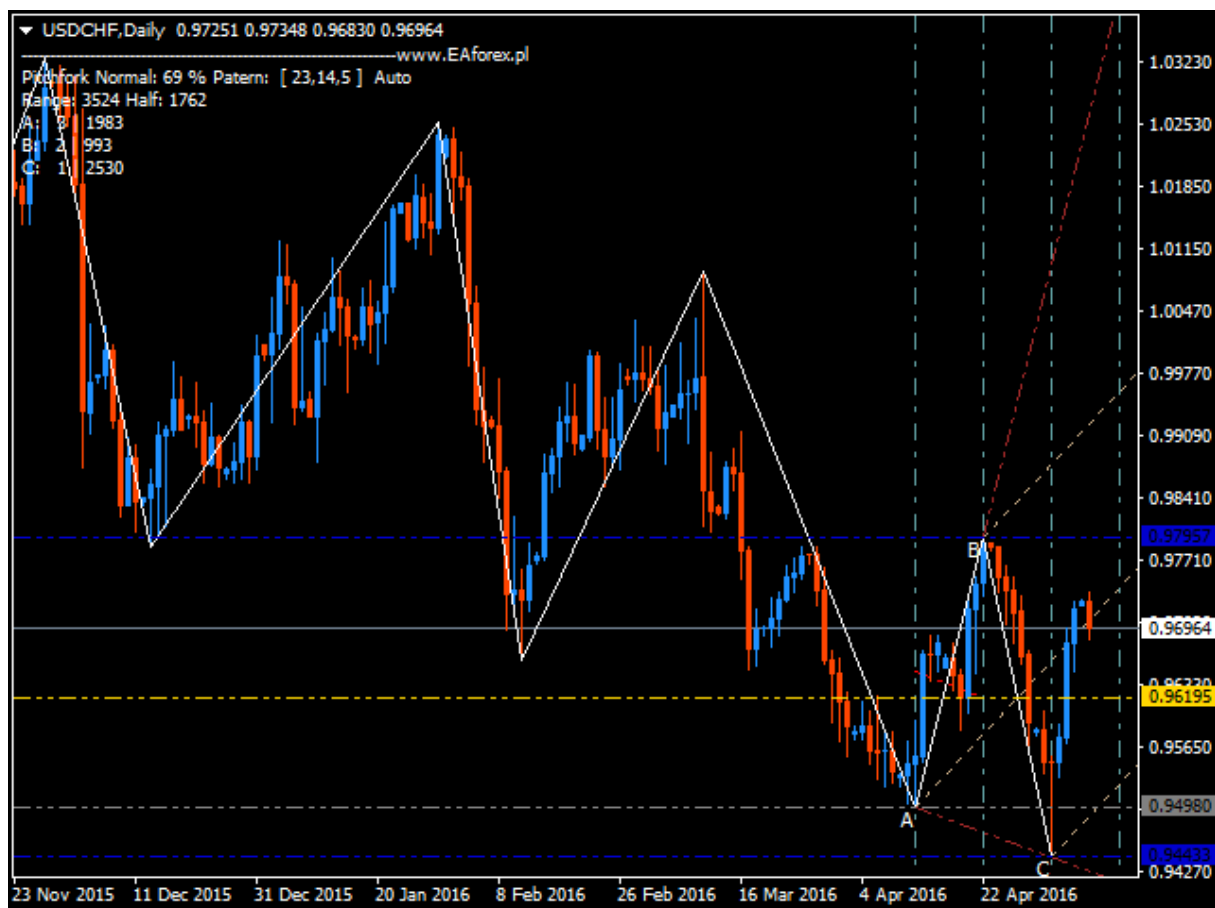
Below shift only point A 2 extremes of the original formation on a range of extremes in front points B and C carried by a hotkey A. Back to the previous point of extremes is effected by the abbreviation S or resetting the state of the point A by an individual to the point shortcut D.



The following chart illustrates adding a line Timing1 via hotkey I, removal of the U, or U / I (next to each other like - / +). As you can see in the chart Timing1 determines the cycles of extremes from A to B to C and further the extreme.

The next graph shows the fork type Pitchfork JeromeSchiff (information panel). A point of your time engagement is the extreme, but typical for this type of fork is 50% of the abolition of the price compared to the price of the previous extreme.





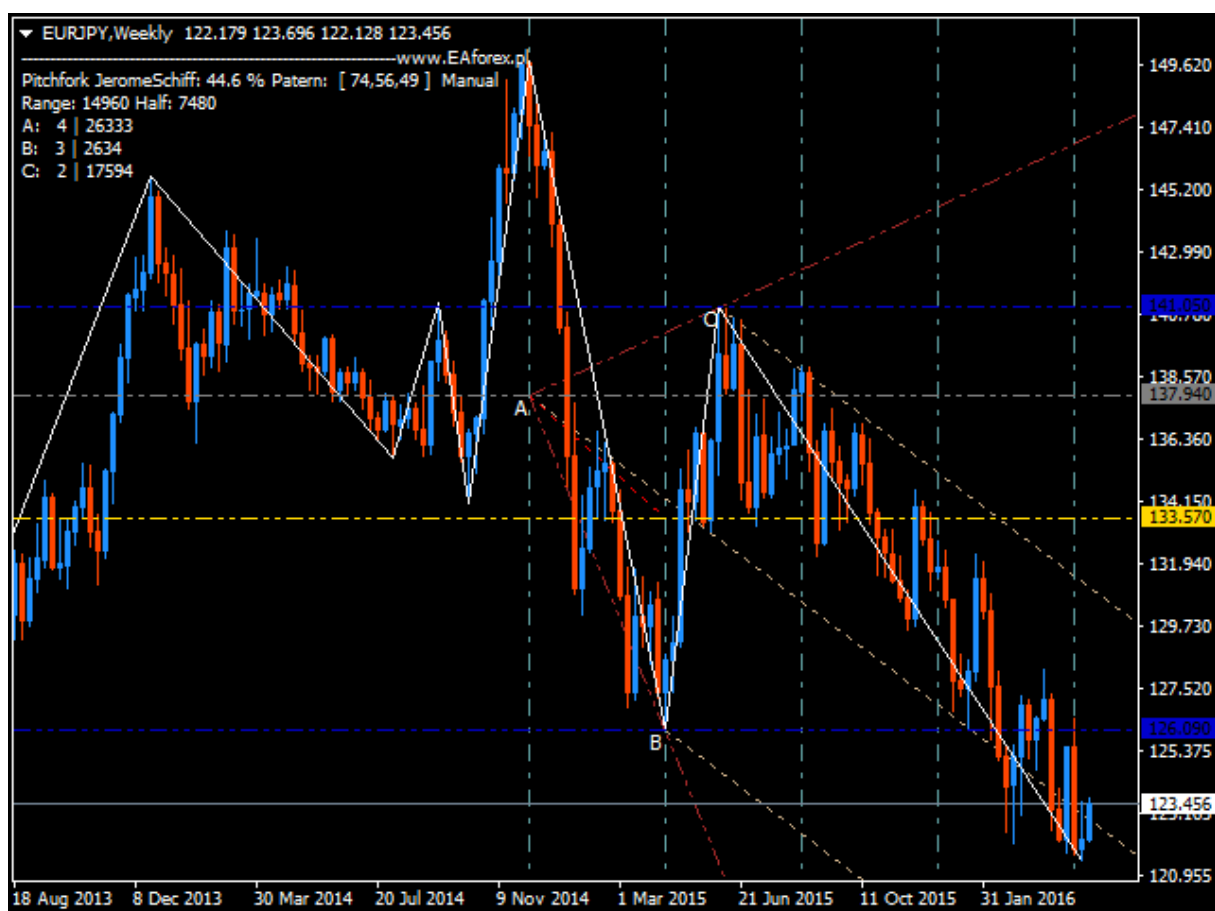
Above chart illustrates adding a line Timing2 via hotkey P removal by O, or O / P (next to each other like - / +). As you can see in the chart Timing2 determines the cycles of extremes from B to C at the extremes of the following.



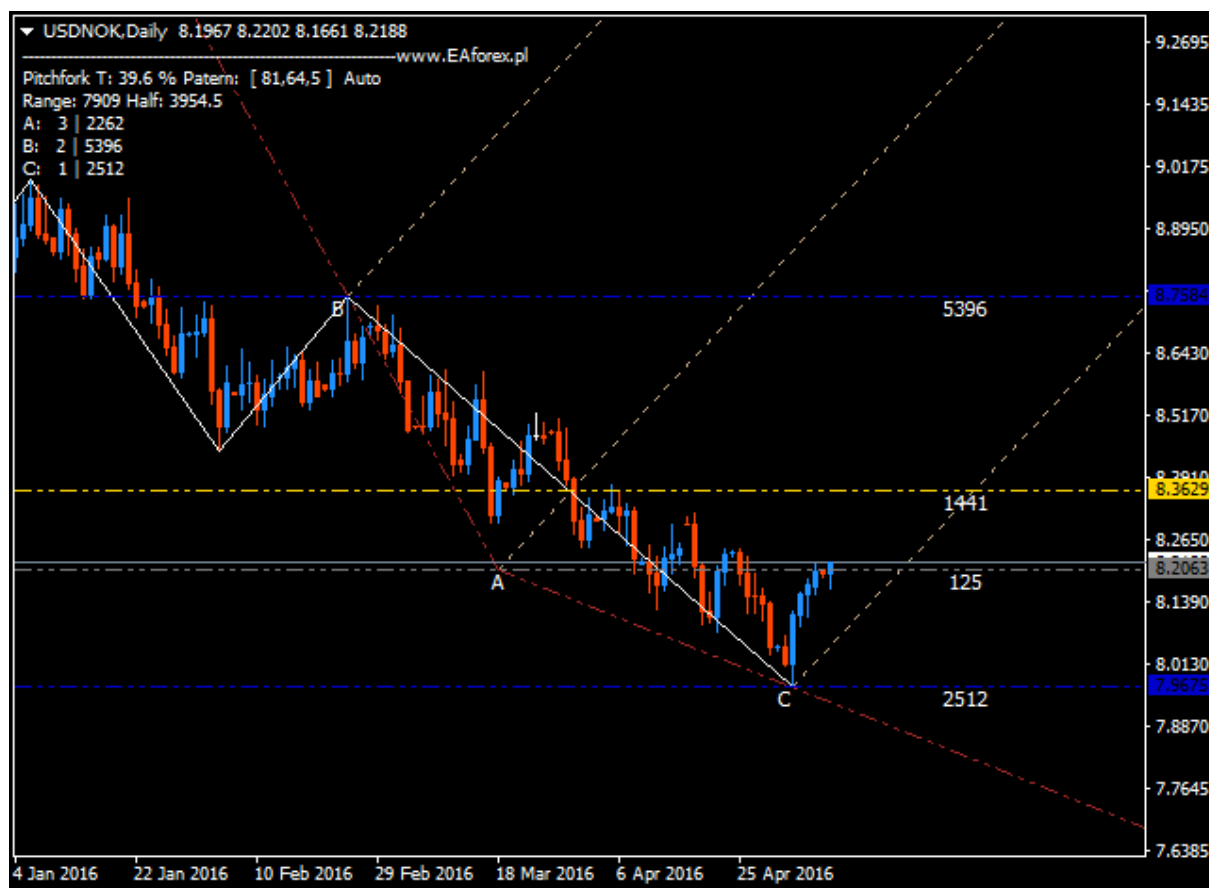
The chart above shows adding a line WarningLines the keyboard shortcut [, by removing]. So the keys [/] (next to each other like - / +). As you can see in the chart WarningLines sets price bands, as possibly. Parallel channels regression.

The graph below illustrates the functionality of the line triggers, as an option Obj_Triggers = TRUE, which create a tool for automatic setting trends for selected extremes.

Next another chart with a pitchfork type Pitchfork JeromeSchiff (information panel). A point of your time engagement is the extreme, but typical for this type of fork is 50% of the abolition of the price compared to the price of the previous extreme.



In contrast to the type fork pitchfork JeromeSchiff (dashboard) from the chart above, where the point A worn by the perspective of price, below is a type pitchfork T, where point A is tolerated by the prospect of time so that this point is defined at the midway extremes A and C if a occurred in the fork type Pitchfork Normal.



8. Comments

To use the tool FxCraft Pitchfork Indicator may be useful to read the books:

INTEGRATED PITCHFORK ANALYSIS, Basic to Intermediate Level, Dr. Mircea Dologa.

The Best Trendline Methods of Alan Andrews and Five New Trendline Techniques By Patrick Mikula.

We encourage you to cooperate with analysts and traders who are practitioners Median Lines (trainers and educators, analysts and traders leading blogs, brokers, trade book and magazine publishing, portals).